



VICTORIA WOMEN'S
 *Transition House*
 SOCIETY

2024-2025 ANNUAL REPORT

RENEWING HOPE, BUILDING LIVES

A safe community for every woman and child starts with listening, believing, and validating their experience.

Renewing Hope, Building Lives

In 2024/25, we were honoured to celebrate 50 years of Victoria Women’s Transition House (VWTH) – a milestone that reflects five decades of compassion, resilience, and community working together to support women and children impacted by gender-based violence. With this celebration now behind us, we look ahead with hope, resilience, and a renewed commitment to building a society free from family and intimate partner violence. Recent news reports from across Canada demonstrate the continuing crisis that women and children face every day. Victoria Women’s Transition House is more determined than ever to provide outstanding and vital services to the community.

We are very proud of the work we do, and we are so very thankful to everyone who helps create our success.

This year’s theme “Renewing Hope, Building Lives” continues our legacy of exceptional staff and volunteers, generous donors, funders and supporters while all of us face the realities of worldwide rising costs for everything from food to clothing to housing and all aspects of our daily lives. The continuing crisis of scarce affordable housing and the knowledge that all these pressures create ever-increasing violence in the home emphasizes the need for our services now more than ever. Help is here.

Our new 50-unit Westshore second stage transitional housing program is now open and fully subscribed. We are enormously grateful for the support from community groups and leaders, donors, funders, supporters and local government in the Westshore and beyond. This new housing provides safe shelter and the time and space for families to recover, heal and rebuild their lives with hope and promise.

Our VWTH Advisory Circle of Indigenous Women Leaders continues to offer advice and recommendations so we can provide the most effective strength-based services for Indigenous women and their children with service delivery

that is culturally safe and appropriate. The Advisory Circle has played a crucial role in fostering meaningful reconciliation and establishing a welcoming and considerate environment at our new Westshore location. They have also contributed to the design of an outdoor enclosed gathering space for intake, counselling, and events in an Indigenous-inspired setting.

We also acknowledge and honour the courage of our clients who have contacted us through the 24-hour Crisis Line, sought help from the Emergency Shelter, pursued counselling and court support, and accessed VWTH programs for children. These are all crucial steps for women and their children to find a strong, successful and fulfilling life. We applaud their courage to dream of a different life and to take those difficult steps toward achieving a life full of hope.

Our dedicated staff members, board members, volunteers, community partners and clients continue to make Victoria Women’s Transition House an outstanding and respected organization. We are very proud of the work we do, and we are so very thankful to everyone who helps create our success.

Victoria Women’s Transition House continues our commitment to our mission, to our work to empower strength in our clients and to rebuilding hope and seeking a better life.

With gratitude,

Makenna Rielly
Makenna Rielly
 Executive Director

M. Karagianis
Maurine Karagianis
 Board Chair





(L to R) Liette Bates-Eamer, Sandra Hudson, Lori Smith, Maurine Karagianis, Hollie McKeil, Kimiya Missaghi, Rosalie Walls. Missing from photo: May Han, Kerrilee Jones, Lauryn Kerr, Nicole Petersen.

Board of Directors

Maurine Karagianis, Chair

Liette Bates-Eamer, Treasurer

DIRECTORS:

May Han	Kimiya Missaghi
Sandra Hudson	Nicole Petersen
Kerrilee Jones	Lori Smith
Lauryn Kerr	Rosalie Walls
Hollie McKeil	

Advisory Circle

Lydia Jim	Victoria Pruden
Sonia Paul	Bea Sam

Senior Leadership Team

Makenna Rielly, Executive Director

Parm Kroad, Deputy Director

Lorelle Posten, Finance Director

Kayla Polet, Interim Finance Director

Susan K.E. Howard,

Development & Communications Director

Our Mission

To collaborate, advocate and educate to address and prevent intimate partner violence and abuse of women and children through supportive shelter, housing, counselling, and other community-based services.



Our Vision

A community free of intimate partner violence, where all women and children are valued, respected, and safe.



Our Values

- Empowerment
- Respect
- Inclusivity
- Safety
- Reconciliation



Land Acknowledgement

It is with much respect to the Lekwungen and SENĆOŦEN speaking peoples of the WSÁNEĆ, Esquimalt, and Songhees Nations, on whose traditional territories the Victoria Women's Transition House Society is located, that we make this acknowledgement with the expressed shared hope to live in communities free of intimate partner violence.

The Glow Gala Celebrates 50 Years of VWTH

VWTH Gala Fundraising Event in May 2024

Victoria Women's Transition House hosted a fundraising gala, Glow, in celebration of our 50th Anniversary. Held at the Delta Victoria Ocean Pointe Resort, the sold-out event welcomed 180 guests for an unforgettable evening of elegance, entertainment, and community spirit.

With an ambitious goal to raise \$50,000 to mark 50 years of new beginnings, we are proud to share that we surpassed expectations – raising over \$70,000 to support programs and services for women and children impacted by intimate partner violence.

Guests enjoyed an inspiring evening emceed by CHEK News' Tess van Straaten, with live auction excitement led by Tony Joe, and a vibrant mix of food, fashion, and fundraising.

This incredible success would not have been possible without the generosity of our supporters. Special thanks to presenting sponsors RBC Wealth Management Dominion Securities and Tulipe Noire Clothing, as well as to the many donors, sponsors, auction and raffle buyers, and volunteers who helped make the evening a resounding success.



Westshore Second Stage Transitional Housing Program

A New Chapter Opens

This year, in January, Victoria Women’s Transition House proudly opened our Westshore second stage transitional housing program in a 50-unit apartment facility with on-site supports – and the largest expansion in our 50+ year history.

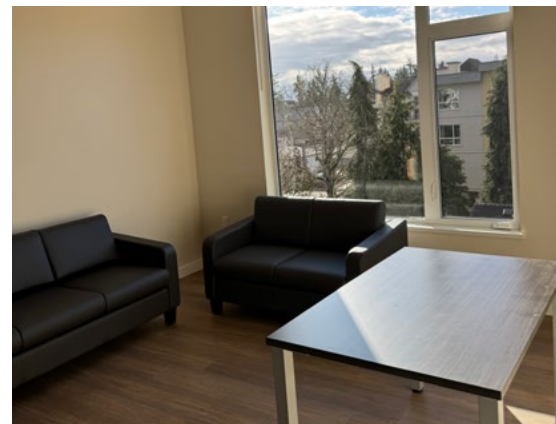
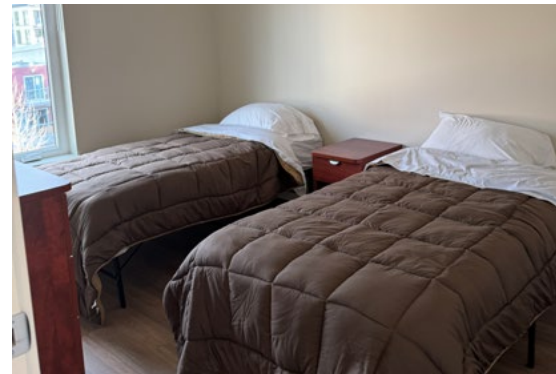
The new site and the program significantly increases our capacity to support women and children impacted by intimate partner violence, offering up to two years of safe, affordable housing with on-site supports.

This Westshore complex includes furnished studio and family-friendly units, as well as accessible units. The building is pet-friendly, and features dedicated counselling space, laundry on site, a playground, and a dog run. An Indigenous-inspired outdoor healing circle is also being created with insight and guidance from our Indigenous Advisory Circle.

Residents receive individualized support, access to counselling, and a wide range of in-house programs focused on healing, wellness, and community connection.

The response has been immediate and overwhelming. Every suite is now occupied, and each one represents a powerful new beginning – a chance to heal, rebuild, and look toward the future with hope.

Already, we are witnessing the power of this space: children starting school, mothers finding work, and families rebuilding with hope and dignity.



A First Step Toward Hope

At the heart of everything we do, VVTH operates a 24-hour Crisis & Information Line and a 30-day Emergency Shelter that serves as an immediate lifeline for those fleeing intimate partner violence. This year **87 women and 58 children** stayed at the Emergency Shelter.

The Shelter provides more than a safe place to sleep – it also offers a place of compassion, warmth, and the first step toward a hopeful path forward.

Each person is welcomed with fresh meals, cozy linens, a playroom for children, and a supportive, trauma-informed environment. Residents can take part in weekly arts and crafts, monthly cooking circles, and seasonal outings to nurture community and belonging.

In 2024/25, our **24-hour Crisis & Information Line** answered **2,417 calls**, offering vital support during moments of fear, confusion, or transition. Our trained staff and volunteers are there 24/7, guiding callers through safety planning, providing emotional support, as well as connection and referrals to community resources.



**87 women
& 58 children**
stayed at the
Emergency Shelter

2,417 calls
answered by our
24-hour Crisis &
Information Line




Jessica's* Story

After a violent assault by her partner of 15 years, Jessica came to the Shelter with no family support and no prior experience accessing services. Nervous and unsure, she leaned on staff for guidance and encouragement. With time, Jessica began planning for her future – securing a part-time job, reconnecting with her adult children, and starting counselling.

“Thank you for your help and support! You are the best people I have ever met... Now I am able to go into the next step of my life.”

By the time she moved out, Jessica had found shared housing, transitioned to a full-time job, and was preparing for a visit from one of her children. She continues to stay in touch and shares that she feels more hopeful every day.

**Name changed for confidentiality.*



Our 30-day Emergency Shelter provides a warm, welcoming, space for those fleeing from intimate partner violence.



A shared kitchen with well-stocked pantry, thanks to the support of donors and supporters, provides much-needed food security.



Our children's playroom provides a safe space for kids staying with us to play, and simply just be kids.

Connection After Crisis

Older women experiencing intimate partner violence face unique challenges – financial dependency, isolation, and compound trauma from many years of abuse. At VVTH, our programs specific to women over 50 years of age focus on empowerment, creativity, and connection.

Through group programs like *Turning the Tide*, *Healing Through the Arts*, and the *Stride Program*, women gained tools to process trauma, express themselves, and rebuild confidence. These programs offer a safe and welcoming space where participants can share experiences, explore creativity, and learn new skills that support both healing and independence.

Many participants also engaged in peer-led activities and storytelling initiatives, including *Photovoice*, which explored the meaning of home through photography and reflection. These opportunities not only help women process their past experiences but also create lasting bonds with peers who understand their journey.

Workshops in wellness, financial literacy, and employment skills provided practical tools for greater stability, while group activities such as meditation, art therapy, and coffee socials fostered a sense of belonging.



Staff and volunteers provide special moments of self-care and connection.

In 2024/25, women in our 50+ programs participated in **72** creative and therapeutic sessions, **55** individual counselling sessions, and **139** support calls, ensuring that each woman had access to the kind of care and community that fit her unique needs.

As well, Victoria Women’s Transition House offers a transitional housing program for women aged 45 to 65 who have experienced intimate partner violence. This rent-geared-to-income program provides safe, independent living in private apartments, along with access to supportive programming. Clients take part in activities and services that foster emotional well-being, build social connections, enhance financial literacy, and connect them to community resources.

In 2024/25, this program provided accommodation and programming for **28** women through trauma-informed support and peer-led activities.



69 women
received services



55 individual
counselling
sessions



24
139
support calls



72 creative &
therapeutic
group sessions



Clients attended
103 group
sessions

Teresa’s* Story

After years of abuse, Teresa made the courageous decision to leave her partner. The violence had taken a toll, especially on her relationship with her adult son. When she entered the transitional housing program, she set clear goals: find stable work, secure housing, and rebuild her bond with her son.

With staff support, Teresa connected with employment programs, leading to full-time work and opportunities for further education. During her stay, she also reconnected with her son in a safe, supportive environment. By program’s end, Teresa had achieved her goal – she and her son moved into permanent housing together, taking a meaningful step forward to heal and rebuild their lives.

*Name changed for confidentiality.

Healing from Abuse and Reclaiming Stability

Healing from abuse doesn't end when a woman leaves – it begins. VWTH offers a range of services that help survivors navigate the transition from crisis to stability.



Stopping the Violence Counselling:

272 women supported through **2,334** individual counselling sessions and **48** group sessions



Outreach Program:

104 clients engaged in **84** therapeutic or skill-building groups on topics like healthy communication, mindfulness, and life skills



Food Security:

180+ women and children accessed meals, groceries, and offered cooking classes and food hampers – helping women learn to budget, plan meals, and reduce food stress post-shelter



Homelessness Prevention Program (HPP):

243 women received rental support – assistance with rent supplements, damage deposits, utilities, moving and storage costs, and housing applications

Food and housing are human rights – and essential to healing. Systemic barriers such as food inflation and housing insecurity continue to affect women's ability to heal and move forward. Despite this, our team provided responsive, flexible, and trauma-informed care to every woman who reached out. With community donations and partners like Food Share Network and local farms, we continue to help women nourish their bodies and minds as they rebuild and renew their lives.

Breaking the Cycle of Violence

Children exposed to intimate partner violence are deeply impacted. The PEACE (Prevention, Education, Advocacy, Counselling and Empowerment) Program helps children and youth (ages 3-18) and their caregivers process trauma and learn non-violent ways of expressing themselves.

Our PEACE counselling programs provide trauma-informed one-to-one and group sessions, helping young clients process their experiences with abuse. In the past year, **132 children and 81 caregivers** benefited from these counselling services, finding safety, hope, and tools to navigate healing together.

VWTH also offered **PEACE Spring and Summer Camps** – safe, creative spaces for children and youth impacted by family violence where they can build friendships, strengthen resilience, and explore healthy ways of coping. Camps include a mix of group counselling combined with art, play, and group activities designed to support emotional expression while fostering connection and fun.

Delivered by VWTH’s PEACE counsellors, the **Violence is Preventable (VIP)** program takes place in schools (grades K to 12), offering age-appropriate, interactive presentations on topics like healthy relationships, emotional safety, consent, and coping strategies. VIP not only educates, but also creates a safe space for students to be seen, heard, and supported – laying the foundation for healthier, violence-free communities. In 2024/25, VIP reached **2,280 students in 19 schools** across the region.

We also continued our **Youth Community Engagement Project**, a peer-led initiative that empowers teens to take action against gender-based violence in their schools and communities. This Project will return in the 2025 school year.




132 children & 81 caregivers
received services



1,114 children’s & 272 caregiver’s
one-to-one counselling sessions provided



44 group sessions
including summer camps



131 school presentations
reached
2,280 students
in **19 schools**
across the Capital Regional District



Guiding Survivors Through Complex Systems

Navigating the legal system while healing from abuse is overwhelming. Our specialized Spousal Assault Victim Support Program (SAVSP) and Regional Domestic Violence Unit (RDVU) teams provide essential guidance, emotional support, and safety planning.

Spousal Assault Victim Support Program (SAVSP)

SAVSP provides emotional support, safety planning, court accompaniment, and referrals for individuals impacted by intimate partner violence. Services are survivor-centered, confidential, and free of charge.

This year, SAVSP supported **over 800 new clients** and responded to **nearly 7,000 inquiries** providing timely, compassionate assistance. With an average of **410 open cases** each month and no waitlist, the team ensures initial contact within two days of referral.

Clients often face multiple, intersecting barriers such as mental health challenges, poverty, or immigration issues. Staff also adapted to growing concerns around technology-facilitated violence and continued to provide vital court support.

Despite the emotional demands of this work, the team remains deeply committed – bringing empathy, flexibility, and strength to every interaction.

Regional Domestic Violence Unit (RDVU)

RDVU is a collaborative program supporting high-risk intimate partner violence cases. It brings together police, victim services, child protection, and community agencies to provide coordinated, wraparound care focused on safety and long-term stability.

This year, RDVU received **86 referrals**, maintained **42 active files**, and continued to offer services without a waitlist. The team supported a growing number of new Canadian and refugee clients, often navigating complex legal and systemic barriers.

Staff expanded their approach to meet clients wherever they were – in hospitals, courtrooms, or community settings. Ongoing training in areas such as coercive control, strangulation, and trauma-informed care ensures the team remains a leader in the field.

RDVU's compassionate, collaborative model remains a cornerstone of VVTH's commitment to survivor safety and empowerment.



RDVU received **86 referrals** & maintained **42 active files**



SAVSP supported **over 800 new clients** & responded to **nearly 7,000 inquiries**



average of **410 open cases** each month



initial contact **within 2 days** of referral



A Collective Effort to End Violence

Volunteers are an essential part of Victoria Women’s Transition House, offering their time, skills, and compassion across nearly every corner of our organization – from preparing meals in the Shelter to answering the 24-hour Crisis & Information Line, supporting community education, fundraising at events, and serving on our Board of Directors.

In 2024-2025:

- **204** people volunteered
- **3,138** hours donated
- Top contribution areas: Shelter assistance (**587 hours**), Crisis Line (**430 hours**), Cooking (**715 hours**)

This year saw a welcome increase in both volunteer interest and hours. The introduction of *Volgistics*, our online volunteer management system, made it easier for volunteers to self-schedule shifts and stay connected, helping to improve flexibility and reducing administrative workload for staff.

Training remains a cornerstone of our program. Volunteers receive in-depth, interactive education on intimate partner violence, trauma, and gender-based violence, preparing them to support survivors with empathy and confidence.

We are also incredibly grateful to the individuals, community groups, and businesses who hosted third-party fundraising events in support of VWTH this year. From the *Canada Day Pancake Breakfast* at the Huntingdon Hotel & Suites, to the *Goddess Run*, to art shows and music events – these creative, community-led efforts raise funds and awareness, helping expand our reach and impact.

To every volunteer and community member who cooked a meal, hosted or staffed an event, answered a call, or offered their professional expertise, thank you. Your contributions make a profound difference in the lives of women and children rebuilding after violence.



Volunteers represent VWTH at local events, sharing information about how people in the community can find support through programs and services.

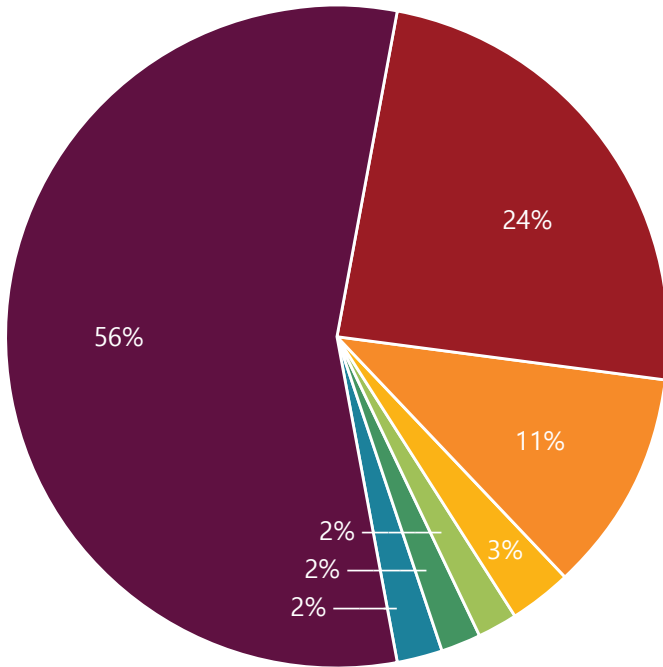
Barbara’s Story

Barbara began volunteering with Victoria Women’s Transition House in September 2024, initially supporting our Emergency Shelter as a cooking volunteer and Shelter assistant. From the start, she was eager to share her experience in mindfulness and meditation with both clients and staff.

Since then, Barbara led two mindfulness meditation groups in collaboration with VWTH staff and brought her 11+ years of teaching experience, both in person and online, to the work she does with our community.

In early 2025, she partnered with the Outreach Program and the Stillness Collective to run an eight-week meditation series. Six clients attended and shared how meaningful the experience was, expressing interest in future sessions. Barbara’s calming presence and thoughtful approach made her group a favourite among participants.

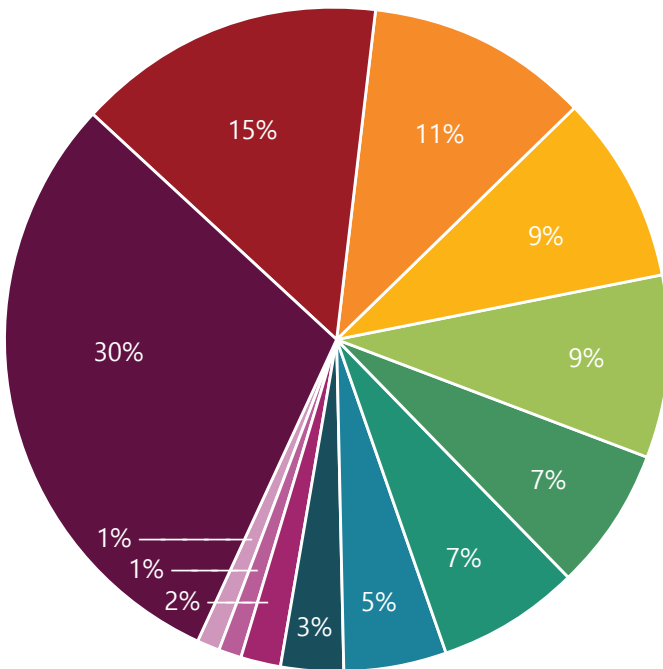
Financial Overview



Revenue: \$7,006,220

How we raised our funds

- Provincial Funding 56%
- Donations 24%
- Grants 11%
- Bequests 3%
- Special Events 2%
- Participant Contributions 2%
- Other Income 2%



Expenses: \$6,277,304

How we spent our funds by program

- Transition House (Emergency Shelter) 30%
- Spousal Assault Victim Support 15%
- Homelessness Prevention Program 11%
- Development and Communications 9%
- PEACE/Children Who Witness Abuse 9%
- Stopping the Violence Counselling 7%
- Second Stage Transitional Housing Program 7%
- Third Stage Transitional Housing Program 5%
- Older Women's Outreach/Safe Home 3%
- Volunteer Program 2%
- Community Education 1%
- Family Law Advocacy 1%

*Year Ended March 31, 2025

Net Amortization	(\$180,226)
Unrealized Gain Investments	\$119,980
Surplus (Deficit)	\$668,670

The 2024/25 surplus includes extraordinary and bequest gifts that will be used to meet ongoing needs, fill program gaps, and build current and future capacity.

Full audited financial information is available by request. Please contact our Finance Director at info@vwth.bc.ca.

Thank You to Our Donors, Funders & Supporters

We are deeply grateful to every donor, partner, sponsor, and community ally. Together, we are renewing hope and building lives.

Pillar	\$100,000-\$249,999	Builder	\$5,000-\$9,999
Patron	\$50,000-\$99,999	Advocate	\$2,500-\$4,999
Benefactor	\$25,000-\$49,999	Leadership	\$1,000-\$2,499
Catalyst	\$10,000-\$24,999	Contributor	\$500-\$999

PILLAR

Anonymous - 2

PATRON

Anonymous - 1

BENEFACTOR

Anonymous - 1

Donald & Bobbi Johannessen

CATALYST

Anonymous - 3

Andrea White

Anita Gadzinska-Myers

Arlene Anderson

Carol Fedrau-Ens

Hoffecker-Sattler Family *

Janice Drent

Kathryn Porter +

Melanie A. Roslyn Cameron

Mike & Jean McVea

Patricia Firth

Robert & Peggy Price

Terry & Sherril Medd

BUILDER

Anonymous - 1

Benjamin Fox *

Helen Vokaty

Jan Galenza

Liz Gobin

Michael Rodger

Nicole Roberts

Patricia Valentine +

Patrick & Anne Anderson

Paul Bailey & Deb Funk

Regina McCullough

Robert Furber & Jeanette Funke-Furber

Robert McMullen & Kathryn Hodgson

Thomas Coward

ADVOCATE

Anonymous - 2

Anne Ashley

Carmen Morris

David Spence

Dennis Liesch

Eric Kerr

Eva Kiess

Fernande P. Harrison

Jacqui MacDonald & John Priddle

James & Gail Maier

Janice Shaski

Jennifer Rosang

Jo Ann Grycan

Kari Dolberg

Kellie Whitehill

Kurt Lane

Lesley Pearce Wagner

Lisa Dempsey *

Lois E. Fernyhough

Malcolm Whittall

Mark & Rachel Mallet

Patricia MacLeod

Ralph Stoerzer

Rick Orr

Shaun & Rita Paterson

Simon & Annette Murphy

Tony Joe

LEADERSHIP

Anonymous - 3

A. Wendy Read

Adelheid Rust

Adrienne Betty

Alan Russell

Albert & Norma D. Buckley

Albert Sweetnam

Alice & Frank Campbell

Allison Guevin

Alyssa Polinsky

Amanda Willett

Amy Paterson

Ann Rothwell

Ann T. Bover

Anne Dobbie *

Anne Mayhew

Anne Raloff *

Anne Romanow

Anne Shack

Ariel Joy Tedford

Audra Kozun

Audrey Krandall-Johnson

Bernd Schweitzer

Beverley Wallace

Beverly Price

Blake Walters

Brenda Watson

Brian P. Grover & Patricia J. Goyette

Brooke Leddy

Bruce & Dena McConchie

Bruce Hoar

Carol S. Sherwood

Cassie Doyle *

Catherine Frewen

Catherine Kallin

Charlene & Eric Kerr

Charlie & Alissa O'Rourke

Chris West

Christine Schwartz

Dan & Pauline Perrins

Daniel W. Nenzi

Daphna Gelbart *

Darrell Errico

Dave Dheere

David & Joan Williams *

David Elkins *

David Reid *

David Wild

Denis Hanson

Diana Dampy *

Diana Gillis

Diana Scheffler *

Diane Miedema

Donald Weston

Doris Clemens

Dorothy Gail Button *

Eileen F. Skinnider

Eirini Nathan

Elizabeth Payson-Knight

Ellen Godfrey *

Emma Murowinski & Evan Poulton

Erika Moser

Erin Quinn Jones

France Marie Laplante *

Gary & Susan Braley

Geoffrey DeKleine

Gillian Stainforth

Greg & Cathy Stone

Greg Sherwood

Heidi Gayleard

J. Gary Mathies *

Jack Hyatt *

Jacqueline Dorgan

Jane Bissell

Jane Eibner

Janis Craig

Jared M. Inch

Jason & Stephanie Sturgis

Jean MacCulloch

Jennifer Senechal *

Jill & Tom Braybrook

Jill Plasteras & John Fyfe

Joan McNeely

John Kot

Josephine Woods

Judith Wilson *

Judy S. Tracy

Julian M. Young *

June Rogers * +

Karen A. Kissinger

Karin Campbell *

Katharine Seaborne

Kent Fullarton

Kim Girtel

Kristy James *

Laura Casey

Laura Floyd & Daniel Dufeu

Laurie Farley

Leanne Atkinson

Leif Tompa & Jo Sentes *

Les & Nancy Maxwell

Leslie Maynard

Liette Bates-Eamer *

Linda Bain

Linda Curtis *

Lori-Ann Polukoshko *

Lynne Wilkie

Lynne Laidlaw

M. Harriet Kendrick

Margaret Graham-Bell

Margaret Newman

Margaret Pottie

Marie T. Skinnider

Marlene Dick

Mavis L. Begg

Max & Lynn Blouw

Mika Moric

Mike & Robyn O'Neill

Myra & Keith Davey

Natalie Skinner *

Neil Marcovitz

Norma Arnold

Ole Schmidt

Patricia Pitts

Patricia Shorting

Patricia Tennant

Paul & Jean DeGroot *

Paul & M. Jill Jeffery

Peter & Sarah Cunningham

Peter Drury

Peter Faiazza

Peter Gannon

Peter Sanderson*

R. Keith Reed

Rachel Barton

Ralph Wood

Rhonda Morrison

Richard Marshall

Richard McKenster *

Robert & Sandra Beaugard

Robert McKechnie

Robert Mitchell

Roderick Mahrt

Ross E. McLean

Ruth & Clifford Leach

Ruth Brain

Ruth Scriven

Sarah Ftaya

Stephanie Clark

Stephen Ross

Steven & Constance Allen

Suhayya Abu-Hakima

Susan Anderson

Susan De Wolf *

Susan K.E. Howard

Susan Walter

Susan Wilson *

Tara Norris

Terry & Bill Wiggins *

Tim & Janet Curry

Tim Relf & Jacquie Mutch

Ursula Steele

Wai Wing Mew

Wayne & Cheryl Clogg

Wendy Woollard

Zig Van Akker

CONTRIBUTORS

Anonymous - 10

Anonymous Sustaining - 1

A. Crawford Walker

Adina Mooney

Alex Burnell

Alexa Blue

Alison Jeffrey *

Amanda Niddrie

Andrea Blair *

Angela Bassage

Ann E. Gargett *

Ann Isaac

Anna De Pauw

Anne Alexander

Anthony Palmer

Arina McLean

Ashley Cooper

Azmina Janmohamed

B. Lynn Kobierski

Barbara McDavid

Barbara Scott

Barbara Toller

Barry Hersh *

Ben Chiasson

Berence Wood *

Bertram & Betty Ann Cowan *

* Monthly Donors + Deceased



Beth Taggart
 Betty Harvey
 Betty Hesser
 Beverley Hopkins
 Beverly Brookman *
 Bill & Shelley Evans
 Bill Myles
 Bonita Willems
 Bonnie Robinson *
 Bradley Campbell
 Brent Bitz
 Brett Goss
 Brian King & Catherine Nickerson
 Bruce Dobby
 Bruce Howe & Janice Howe *
 Carol Ann Heuchert
 Carol Howard
 Carol Nugent
 Cary Gillespie
 Caryl Wyse Peters
 Catherine E. McGregor *
 Cathy Yaskow
 Chin Yuen
 Chris & Mary Chapman
 Chrissy Raniseth
 Cindy Newfield
 Colin & Linda Campbell
 Colleen Wilson *
 Connie Kleckner
 Cynthia Carver
 Daniel Herlinger
 Darlene Masso
 Darryl & Karen Young
 David John Black
 David W. Runkle *
 Dawn Robson
 Debbie McMullen *
 Deborah Needley
 Dennis Truss *
 Dieneke Boudewyn
 Donald & Dagmar Campbell
 Donald Rutherford
 Doris Schuh
 Doug Clarke
 Douglas Boyd
 Douglas Hensby
 Elizabeth Voyser
 Ellen Lee *
 Ellie Horgan
 Elvira Sentes *
 Etta Connor
 Evelyn Battell *
 Frances & Randy Stetson
 Fred Willows
 Geneen Russo
 Georg Hoevel
 Gerald Donkersgoed
 Gerhard Herndler
 Gerrit Clements
 Gordon & Lois Luciuk
 Gregg Sauter
 Gwendolyn Thomson *

Harold & Jolene Scott
 Heather Daynard
 Heather Lejeune
 Hedy Kruger
 Heidi Krogstad
 Irene & Edward Relph
 Irene Magill
 J. Malcolm Gaston
 James & Cheryl Sacamano *
 Jane Browning
 Jane Roberts *
 Jane Turner
 Janice Baynham *
 Janice Dey
 Jean Koenig
 Jen Guenther *
 Jennifer Waelti-Walters *
 Jennifer Yuen *
 Jenny Biem
 Jessica Tatlow *
 Jill Lecours
 Joan Blackwood
 Joan Coldwell *
 Joelle Cummings
 John Gould
 John McBride
 John Mullin
 John Oleson
 John Peachey
 Jovanka Jovanovic *
 Joy Nichols
 Judith & Brian Dunning *
 Judith Blanchette *
 Judith Zala
 Judy James
 Julie Rust *
 K. D. Neill
 K. Eileen DeFoe
 Karen Lightbody
 Karen Malcolm *
 Karyn Pate
 Katherine Hewko
 Katherine MacCormick
 Kathleen Cochran
 Kathleen Eva Ironmonger
 Kathryn Armstrong
 Ken Faught *
 Kenneth Amodeo
 Kenneth & Alana Pearce
 Kenny Toews *
 Kent Wilson
 Larry Anderson
 Laura Calhoun *
 Laurel Bowman *
 Leslie Maze
 Linda Jarman
 Linda Myles
 Lois Badenhorst
 Lori Smith *
 Lori Wanamaker *
 Louise Joly *
 Louise Preston
 Louise Thurber

Luis Gomez Belmonte
 Lynda Cronin
 Lynn Hannah
 Lynne Milnes
 Makenna Rielly
 Margaret Hamilton Kortez
 Marguerite Richards
 Marie Curtis
 Marie Markowski
 Marilyn Norman
 Marina Powell
 Marion Buller
 Marjorie Pine
 Marla Steinberg
 Marnie Bradfield
 Mary E. Harker
 Mary O'Shea *
 Matthew Stow
 Maureen Duncan
 Maurine Karagianis
 Merv Porath
 Michael & Madeline Carpenter *
 Michael Rooksby
 Michael Verran
 Michelle Trofimuk
 Nancy Martens
 Nicole Petersen
 Norma Wuester
 Patricia Carfra
 Paul & Hazel Ramsey
 Paul Silletta
 Penelope Lipsack
 Peter & Dianne Sandercock
 Peter & Mary Darling *
 Peter & Sheila Gallagher
 Priscilla Hermans
 Rachel Laird
 Rachel Rogers *
 Ralph Durand
 Ravi Parmar
 Rebecca Alleyne
 Rihard & Pat Smith
 Rob & Fran Wallace
 Robert & Doreen Alton *
 Roberta Burroughs
 Roy & Janet Rolstone
 Ryan Taylor
 Samantha McGinley *
 Sandra Bumpus
 Sandra Hudson
 Sandra Mayzel
 Sharon & William Baker
 Sharon Belton
 Shauna Fenwick
 Sheila Bradley
 Sheila Howard
 Sheila Skinner
 Shirley Grosser
 Stephanie Harrington
 Stephen Robards & Geoffrey Robards *
 Stuart Kerr

Susan Bing
 Susan Doyle
 Susan Findlay
 Susan J. Lane *
 Susan Mickelson
 Suzy Kirkland
 Thomas Crosbie
 Thomas Homer-Dixon
 Tori Feldman
 Trevor Lewis
 Trudy & Bob Farrell
 Vincent Hopkins *
 Walter J. Clark
 Walter Schibli
 Wendy Carmichael
 Wendy Taylor
 William & Heather Weeks
 William & Rosemary Carere
 William & JoAnne Fife

FRIENDS

Our sincere thanks to the 1,551 donors who gave gifts of up to \$499 during 2024-25; to our 170 Anonymous Friends; and to our 185 Sustaining Monthly Friends

LEGACY

Estate of Diana Stephens
 Estate of Dianne M. Frampton
 Estate of Dorothy Allison Osler
 Estate of John MacDonald Wozny
 Estate of Kenneth Roy Prior
 Estate of Nora Alida Ronis
 Estate of Sabrina A. Port

CORPORATE SUPPORT & SERVICE CLUBS

BENEFACTOR

7965532 Canada Inc.

CATALYST

Bosdet Homes Real Estate
 CFXA Santas Anonymous Society
 CIBC Private Wealth - Wood Gundy
 Garfinkel Publications
 PBE Holdings Inc
 Peninsula Co-op
 Rotary Club of Victoria - Harbourside
 Shoppers Drug Mart - Corporate
 Shoppers Drug Mart- Westshore

BUILDER

905128 Alberta Ltd
 EDC Systems Inc *
 Joseph Gonyeau Services
 Mallory Consulting Ltd. *
 Royal Lepage Coast Capital Realty

ADVOCATE

Brian D. Jones Law Corporation
 Fortis BC Energy Inc.
 Hansbraun Investments Ltd.
 Red Art Gallery
 Royal Canadian Legion Trafalgar/Pro Patria Branch #292
 Shirley A Tease Productions
 The AME Consulting Group Ltd.
 Victoria Truth Centre Inc.

LEADERSHIP

1053279 BC Ltd.
 1286461 BC Ltd
 A.H. Winter and Son Construction
 Absolute Therapy Inc.
 Ancient Order of Doers Anonymous Society
 Avalon Accounting Inc.
 BC Nurses' Union
 Berwick Investments Ltd.
 Beverly Carter Notary Public
 Biophilia Design Collective Ltd. *
 Blake Moreau - Personal Real Estate Corporation
 Board of Directors - Victoria Women's Transition House
 Bodacious Lifestyles Inc
 Brentwood Bay Veterinary Clinic Ltd.
 Brown Henderson Melbye
 Browne Associates Law Corporation Ltd.
 Cale Grieve Personal Real Estate Corporation
 Canadian Antler Design
 CDW
 Christ Community Church
 Church of St. George the Martyr
 Coast Capital Savings
 Colleen Austin Personal Real Estate Corporation
 Comox Valley Transition Society
 Construction and Specialized Workers' Union Local 1611
 Costco Wholesale Canada Ltd.
 Cupe 951
 CUUWA
 Davis Construction Ltd.
 Dimensional Business Solutions

* Monthly Donors + Deceased



Grateful Tree at the Shelter

Dr. Gaylene Hargrove Incorporated
 Dr. Karen Palmer Inc. *
 Dr. Katrina Stockley Inc.
 DW Smith (1984) Ltd
 Dynamic Neural Retraining System
 Early Ford V8 Club - Vancouver Island Regional Group #109
 Emerald Day Spa Ltd.
 Enkon Information Systems
 Fast Enterprises
 Heirloom Linens
 Hide + Seek Coffee *
 Holy Trinity Church
 Hospital Employees' Union
 Huntingdon Manor
 Inn at Laurel Point
 Inspired Results Group
 Island Temperature Controls Ltd.
 J and M Asian Food Market
 Jawl Properties Ltd.
 Jim Pattison Toyota Victoria
 K.D.S. Senior Ladies Craft Group
 Keech Turpin Garnett Wealth Advisory CIBC Wood Gundy
 Kiwanis Club of Oak Bay
 Knights of Columbus Council 9703
 L.A. Fraternal Order
 Lenergy Resources Inc.
 Little Poet Art
 Lotus Aroma
 Machinists' Fitters and Helpers Local 3
 Marathon Business Solutions Inc. *
 Maximum Express Courier, Freight and Logistics
 Michelle Matte Interiors
 Mr. Booth
 Oak Bay High School Interac Club

Ollie Quinn Optometrist
 ONE SEED Architecture and Interiors Inc.
 Origin Planning Ltd.
 P.E.O Sisterhood Chapter AA-AB
 Pacific Christian School Student Group
 Pacific Coastal Airlines
 Paramount Coastal Designs Ltd.
 Pearlman Lindholm Law Corporation
 PEO Sisterhood Chapter BO
 PSAC UNDE Local 21016
 PSAC-BC Regional Council
 RDH Building Science Inc.
 Reed Pope LLP
 Renew Massage Therapy and Acupuncture *
 Robin Longe Law Corporation
 Roof
 Rotary Club of Victoria-Saanich
 Roy Group Leadership Inc. *
 Royal Canadian Legion #127 - Public Service Branch
 Royal Canadian Legion #7 Britannia Branch
 Royal Canadian Legion Ladies Auxiliary #91
 Saanich Baptist Church
 Salish Sea Stones
 Sandra Froher Art Spirit Essence Fashion
 Scarlet Jaxen Consulting
 Schibli Stedman King, CPA
 Seaspan ULC
 Senior Trades Supervisors Association
 Shoppers Drug Mart
 Shoppers Drug Mart - Beacon Plaza
 Shoppers Drug Mart-Esquimalt
 Shoppers Drug Mart - Hillside
 Shoppers Drug Mart - Royal Oak
 Shoppers Drug Mart - Saanichton
 Shoppers Drug Mart-Uptown
 Smart Dolphins IT Solutions Inc.
 SnoreMD
 South Island Church of Christ
 SSA Marine Canada - Victoria Cruise Team and PNWTS
 St. Sophia Orthodox Church
 Stone Age Marble and Granite
 Sweetly Raw
 TallSky Consulting Group LLP
 The Butchart Gardens
 The Cygnus Design Group
 TMA Systems, LLC
 Tofino Gallery of Contemporary Art
 Tulipe Noire Clothing
 Turnabout

Pillar	\$100,000-\$249,999	Builder	\$5,000-\$9,999
Patron	\$50,000-\$99,999	Advocate	\$2,500-\$4,999
Benefactor	\$25,000-\$49,999	Leadership	\$1,000-\$2,499
Catalyst	\$10,000-\$24,999	Contributor	\$500-\$999

Twice as Nice Consignment Boutique
 UA Local 324 Plumbers and Pipefitters
 Unifor - Local 4276
 Unifor Local 114
 Vancouver Island Netherlands Association
 Van-Isle Projects Ltd.
 Victoria Chinese Ladies Club
 Victoria Christian Reformed Church
 Victoria Native Friendship Centre
 Victoria Orthodontic CDA Study Club
 Victoria Real Estate Board
 Victoria Women's Newcomers Club
 VIH Aviation - Execujet
 Villamar Construction Ltd
 Virtual Care Services at Island Health
 Westmont Montessori School
 YYJ Dog Walks

The Daniel Dax Fund through Victoria Foundation
 The Lake Family's All One Fund
 The Potash Family Foundation
 Viveka Foundation Fund through Victoria Foundation

BUILDER
 Anonymous - 1
 A and S Murphy Family Fund
 BC Society of Transition Houses
 Elizabeth Russ Fund through Victoria Foundation
 Marymax Fund through Victoria Foundation
 Pass-Through Grants Fund through Victoria Foundation
 Sardul S. and Amar Gill and Family Foundation
 Telus Friendly Future Foundation
 The McLean Foundation
 Victoria Foundation

ADVOCATE
 Bodrug Family Foundation
 David Charitable Trust
 Doner Family Giving Fund
 L.P. Murphy Charitable Fund
 William, Laura and Christopher Cook Memorial Fund through Victoria Foundation

LEADERSHIP
 Anonymous Fund through Victoria Foundation
 Aqueduct Foundation
 Audrey Paterson Memorial Fund held at Vancouver Foundation
 Cornett Family Fund through Victoria Foundation
 Cote Family Memorial Foundation
 Ewasiuk-Dobbie Family Foundation
 Hugh and Marguerite Fraser Support Fund through Victoria Foundation
 Ken and Rosemary Taylor Foundation
 Leona and Carl Fund held at and administered by Vancity Community Foundation

Lynn Allaire Foundation
 Nicholds Family Foundation
 Patricia Tennant Family Trust
 Pitts Family Foundation
 The Exeter Foundation
 The Lalli Family Foundation
 Unifor Social Justice Fund
 United Commercial Travellers' Fund through Victoria Foundation
 Waldman/Shnier Charitable Fund held at Vancouver Foundation
 Windhover Fund through Victoria Foundation
 Zonta Club of Victoria, Olga Bartello Fund through Victoria Foundation

GOVERNMENT
 BC Housing
 Government of Canada - Department of Justice Canada
 Government of Canada - Employment and Social Development Canada - New Horizons for Seniors
 Government of Canada - Housing, Infrastructure and Communities Canada: "Reaching Home", administered by the CRD
 Land Title and Survey Authority of British Columbia
 Province of BC - Community Gaming Grants
 Province of BC - Ministry of Children and Family Development
 Province of BC - Ministry of Public Safety and Solicitor General Community Safety and Crime Prevention Branch
 Provincial Employees Community Services Fund

SPECIAL MENTION
 Anonymous
 Amir Gill
 Cathy Noel
 Christine Seaville
 Julia Canton
 Kari McLay
 Kim Potash

FUNDS & FOUNDATIONS

PATRON
 Silver Gummy Foundation

BENEFACTOR
 Access to Benefits Advocacy Fund through Vancouver Foundation
 Eldon and Anne Foote Fund held at the Edmonton Community Foundation
 Price Family Charitable Gift Fund
 Times Colonist Christmas Fund Society
 Tony and Mignon Fenton Trust

CATALYST
 ALACS Fund through Victoria Foundation
 Ann Rae Fund
 Ferreira Family Fund 2021 through Victoria Foundation
 Norgaard Foundation
 Ocean Park Foundation
 RBC Foundation
 Royal LePage Shelter Foundation
 The Annual Foundation

* Monthly Donors + Deceased



24-Hour Crisis & Information Line

Our confidential Crisis & Information Line (250-385-6611) provides 24/7 support to those experiencing or recovering from intimate partner violence (IPV), as well as their loved ones and professionals. Staff and trained volunteers offer non-judgmental, trauma-informed support and information.



Emergency Shelter

Our 18-bed Emergency Shelter offers a safe, supportive space for women, women-identified, and non-binary individuals – alone or with children – fleeing IPV. Clients can stay up to 30 days and access counselling, legal support, childcare, and housing referrals.



Second Stage Transitional Housing Program

This transitional housing program provides 50 units of safe, affordable housing for individuals impacted by intimate partner violence. Clients can stay 90 days to two years and access wraparound programs, supports and services.



Third Stage Transitional Housing Program

This transitional housing program offers affordable one-bedroom units for women and non-binary individuals (ages 45–65) leaving abusive relationships. Clients can stay up to two years while receiving counselling, life skills training, and housing support.



50+ Outreach Program

This program supports women aged 50+ with counselling, advocacy, and specialized services to help them rebuild their lives after experiencing violence or abuse.



Safe Home Program

Designed for individuals aged 50+ who can live independently, the program offers short-term safe housing within our transitional facilities, with support services.



Homeless Prevention Program (HPP)

HPP helps women at risk of homelessness secure private market housing through rent supplements, damage deposits, and support for moving or storage expenses.



Spousal Assault Victim Support Program (SAVSP)

SAVSP offers emotional support, safety planning, court accompaniment, and short-term counselling for those navigating the criminal justice system after experiencing IPV.



Regional Domestic Violence Unit (RDVU)

This specialized team – including police, parole, social workers, and VWTH victim services workers – works together to support survivors of high-risk IPV with safety planning, investigations, and risk assessments.



PEACE Program (Children Who Witness Abuse)

PEACE provides counselling for children and youth who have witnessed abuse in the home, helping them process trauma and build healthy coping strategies. Public workshops, school presentations, and children's camps are also offered.



Stopping the Violence (STV) Counselling

STV offers individual and group counselling for women currently experiencing or recovering from abuse. Services are client-centered and trauma-informed.



Volunteer Program

Volunteers support many of our programs and services. All receive extensive training on IPV, gender-based violence, and the effects of abuse on women and children.



Food Security Program

This program coordinates community food donations, meal planning, and dietary needs across our shelter and housing programs to support client wellness and food access.



Housing Outreach

We support clients in finding safe, affordable housing through one-on-one guidance, resource development, market scans, and drop-in information sessions.



Outreach Program

This program supports clients as they transition from Shelter, offering resource navigation, psychoeducational groups, and drop-in support sessions to ease the shift to independent living.



VICTORIA WOMEN'S
Transition House
SOCIETY

At Victoria Women's Transition House, we see every woman's journey as an act of resilience.
We honour her strength.
We walk beside her in hope.
We believe in her future.

Need support? Call 24/7

- ☎ 250-385-6611
- 📍 100-3060 Cedar Hill Rd, Victoria, BC V8T 3J5
Community Office: 250-592-2927
- 🌐 www.transitionhouse.net
- ✉ info@vwth.bc.ca
- 📱 [@VictoriaWTH1](https://twitter.com/VictoriaWTH1)

Charitable No. 10817 3501 RR0001